

LA CRETE JUBILEE PARK

Proposed Development Plan

A JOINT EFFORT:

Mackenzie County

La Crete & Area Chamber of Commerce

La Crete Agricultural Society

Local businesses and individuals



JUBILEE PARK COMMITTEE MEMBERS

NAME	AFFILIATION	CONTACT #
Lloyd Janzen	Community Member	(778)214-2086
Henry Klassen	Mackenzie County	(780)928-3983
Larry Neufeld	La Crete Chamber	(780)928-2278
Byron Peters	Mackenzie County	(780)928-3983
Lorraine Peters	Community Member	(780)927-3315
Susan Siemens	La Crete Ag Society	(780)928-4447
Lena Wiebe	Community Member	(780)928-3661





Background History:



In 2011 the La Crete Chamber and the La Crete Ag Society banded together to organize three community events.

Future plans were made to develop a Jubilee Park to commemorate 75 years of Mennonite settlement.



Carcajou Boat Tour

La Crete Landing Trail Ride Jubilee Supper & Slideshow

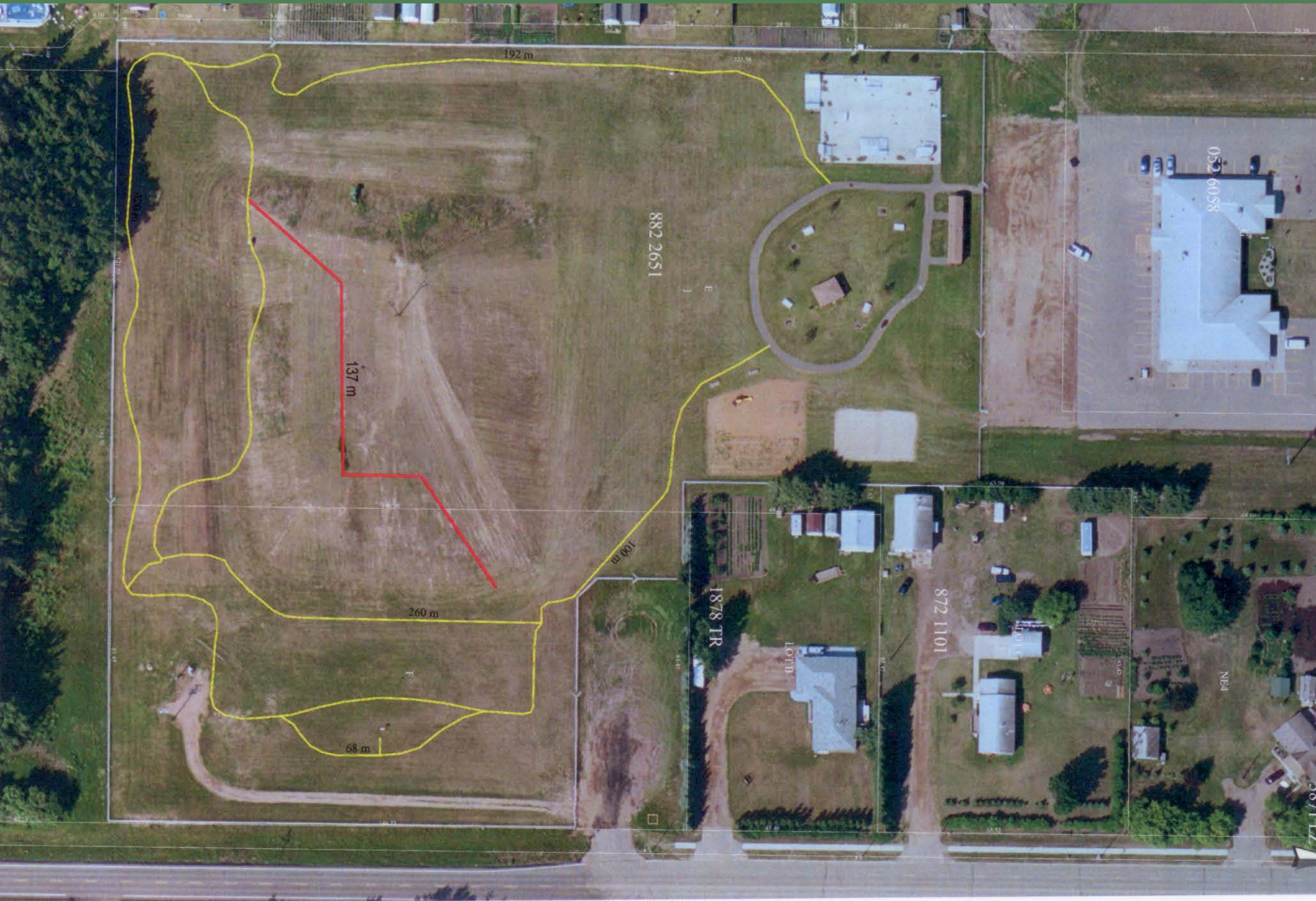
Vision & Benefits:

We envision the development of
a commemorative park
along La Crete's Main Street.

- To celebrate & preserve La Crete history
- Enhance tourism within Mackenzie County
- Provide Green Space to the community
- Promote town beautification
- Encourage community pride
- Encourage cultural experiences
- Honor our heritage



Proposed walking trail and hill fence

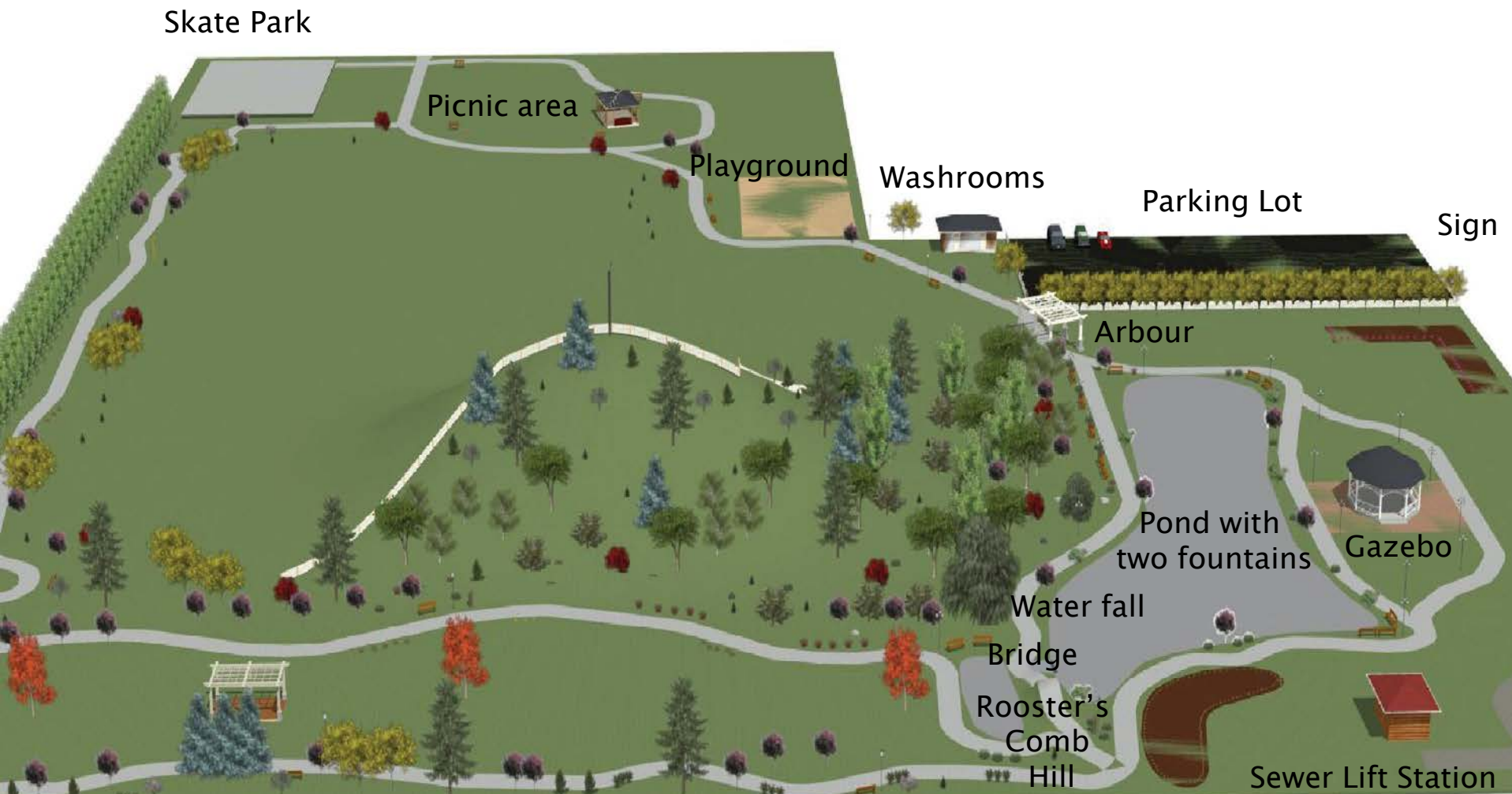


Jubilee Park Layout



Looking south-west

Looking north



Jubilee Park Tentative Drawing Aerial View

Skate
Park

Picnic
Area

Slide Hill

Playground

Pond

Parking
Lot

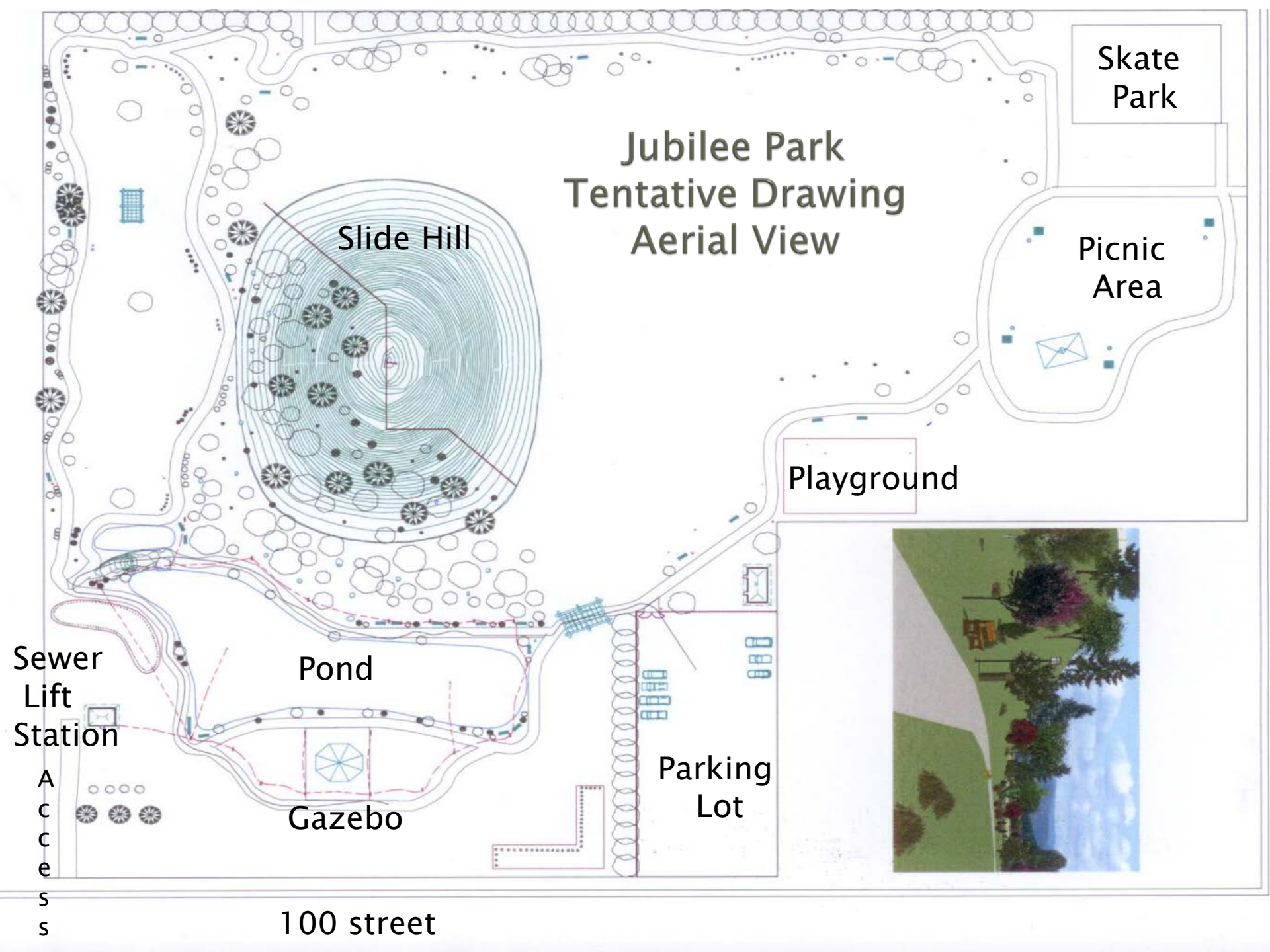
Gazebo



Sewer
Lift
Station

A
C
C
e
S
S

100 street



FEATURES:



Entrance Sign Idea

SLIDING REMAINS ON THE NORTH & WEST SIDES



Pond
with two
fountains
on the
east side
of the
hill





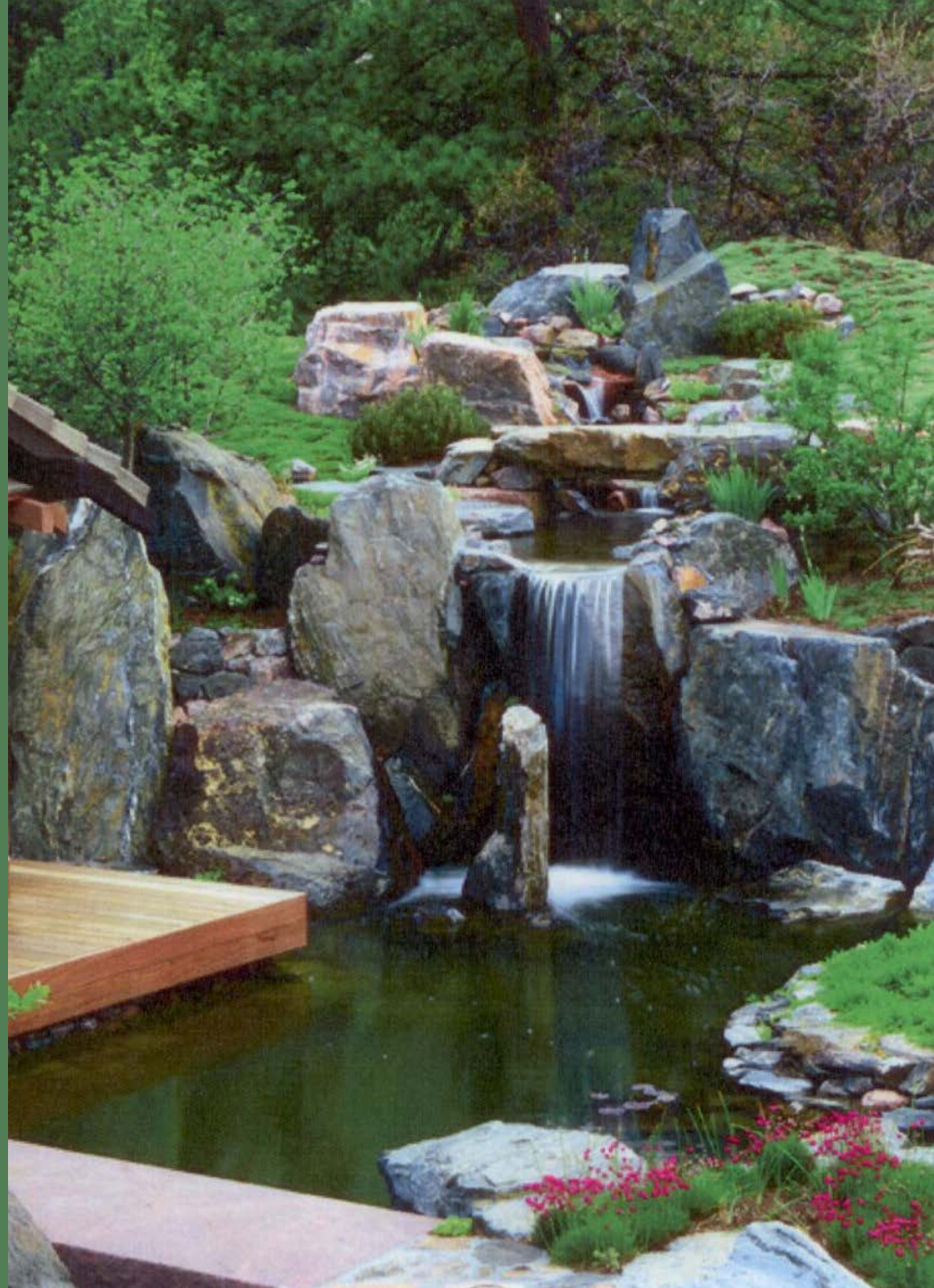
Pond 20 years from now... 😊

Pond serves as an old-fashioned skating pond in the winter



WATER FALL

On the
south-east
corner of the
hill



Bridge – just west of the falls



Large Oval Gazebo on Brick

A community asset for events like weddings, music bands, picnics, & photo shoots



Jubilee Park Arbour at park entrance



History Monuments along the walking trail

▶ Pre-Mennonite Settlers

The area was surveyed in 1909 by J.A.S. King. When the Mennonites started moving into this area in 1936 they found other settlers already living and farming in the area. Many had come to the area hoping to get rich in the fur trade. Some were Aboriginal; some were American, and others of European descent. These pre-Mennonite settlers were of great assistance to the Mennonites as they traded goods, shared equipment, and provided employment.



1 000 m of Paved Walking Trails with Benches and Light Posts



20 years



from now



Washroom Facility



2013 Wish List of County:

- ▶ – Support letter for grant writing
- ▶ – Open Trust Fund
- ▶ – Provide charitable receipts to donors
- ▶ – Check for underground services
- ▶ – Provide some equipment/labourer use (just a few hours or days here and there)
- ▶ – Change access to sewer lift station
- ▶ – Build nice shed over sewer lift station
- ▶ – Build fence up and over the hill
- ▶ – Build steps up the NE corner of the hill
- ▶ – Surveillance monitoring



2013 Committee “to-do list” Development Plans

- ▶ Fundraise
- ▶ Plant 100+ trees
- ▶ Dig pond
- ▶ Develop Rooster’s Comb Hill
- ▶ Ground conditioning
- ▶ Seed lawn
- ▶ Additional development as funds allow



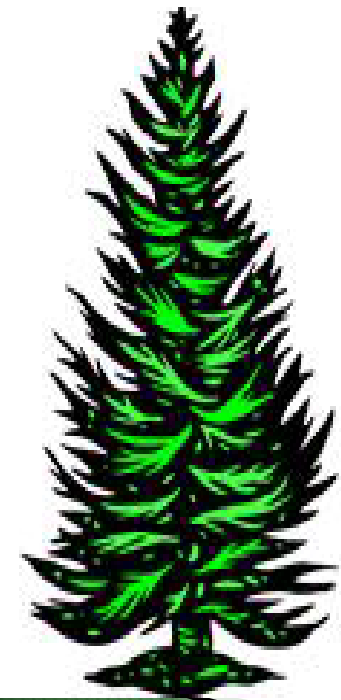
2014 – 2015 Development Plans

- ▶ Pave 1000 metres of walking trails
- ▶ Set up 32 light posts
- ▶ Set up 25 benches
- ▶ Lay bricks around gazebo
- ▶ Build gazebo
- ▶ Build arbor
- ▶ Develop flower beds
- ▶ Develop water fall
- ▶ Install bridge
- ▶ Install sign
- ▶ Washroom facility



Ongoing Expectations from County

- Maintenance/upkeep of trail & pond
- Mowing
- Snow removal
- Annual \$ budget for park flowers
- Watering of young trees and flower beds
- Surveillance monitoring



Ongoing Committee Commitment



- ▶ Design & plant annual flower beds with additional community volunteer help
- ▶ Make improvements as funds allow



Jubilee Park Development Budget

DESCRIPTION	COST
Arbour Supplies \$10,000 + 8 pilings (\$2080) + labour \$2500	\$14,580
Benches with base pads (concrete) 25 x \$875	\$21,875
Boulders/Rocks 25 x \$300	\$7500
Brick work around gazebo	\$5500
Bridge – 30’ steel (\$9630)+ 4 pilings x \$260 (\$1040)	\$10,670
Electrical for fountain & waterfall pumps & light posts	\$15,000
Entrance Sign (\$2000) + posts (\$2000) + 2 pilings x \$750 (\$1500)	\$5500
3 Flag poles (\$550) + Flags (\$50)	\$2000
Fountains – 2 x \$1300	\$2600
Gazebo 18’ x 24’ (\$10,000) + labour (\$3000)	\$13,000
Grass Seed for four acres	\$150
Light Posts (3–lamp) 20 x \$159.99	\$3200

Budget cont'd

DESCRIPTION	COST
Light Posts (solar) 12 x \$500	\$6000
Pond & Rooster's Comb Hill development	\$7650
Pond irrigation system and hoses	\$3000
Pond liner @\$6/sq metre x 1650 m (Nilex)	\$9900
Shrubs - 100 x \$20	\$2000
Surveillance Camera System	\$15,000?
Trees - 150 x \$50 (7500)+ tree planter services (\$6500)	\$14,000
Walking trails (paved) 1000m x \$175/m	\$175,000
Washroom facility	\$15,600
Water fall pump & biological filtration system	\$5000
TOTAL	\$354,725
Prices do not necessarily all include labour as we anticipate	volunteer help

Proposed Jubilee Park Revenue

▶ Account Balance	\$ 11,000
▶ April Fund Raiser.....	\$ 7,500
▶ Cfep Grant	\$125,000?
▶ CIF Grant	\$125,000?
▶ Community Donations	<u>\$100,000?</u>
▶ TOTAL	\$368,500



